

**Appendix A**  
**Part 2**

**Neighborhood Parklands**

**Site**  
**Maps and Updates**

## Englewood Waterfront Site

### **Description:**

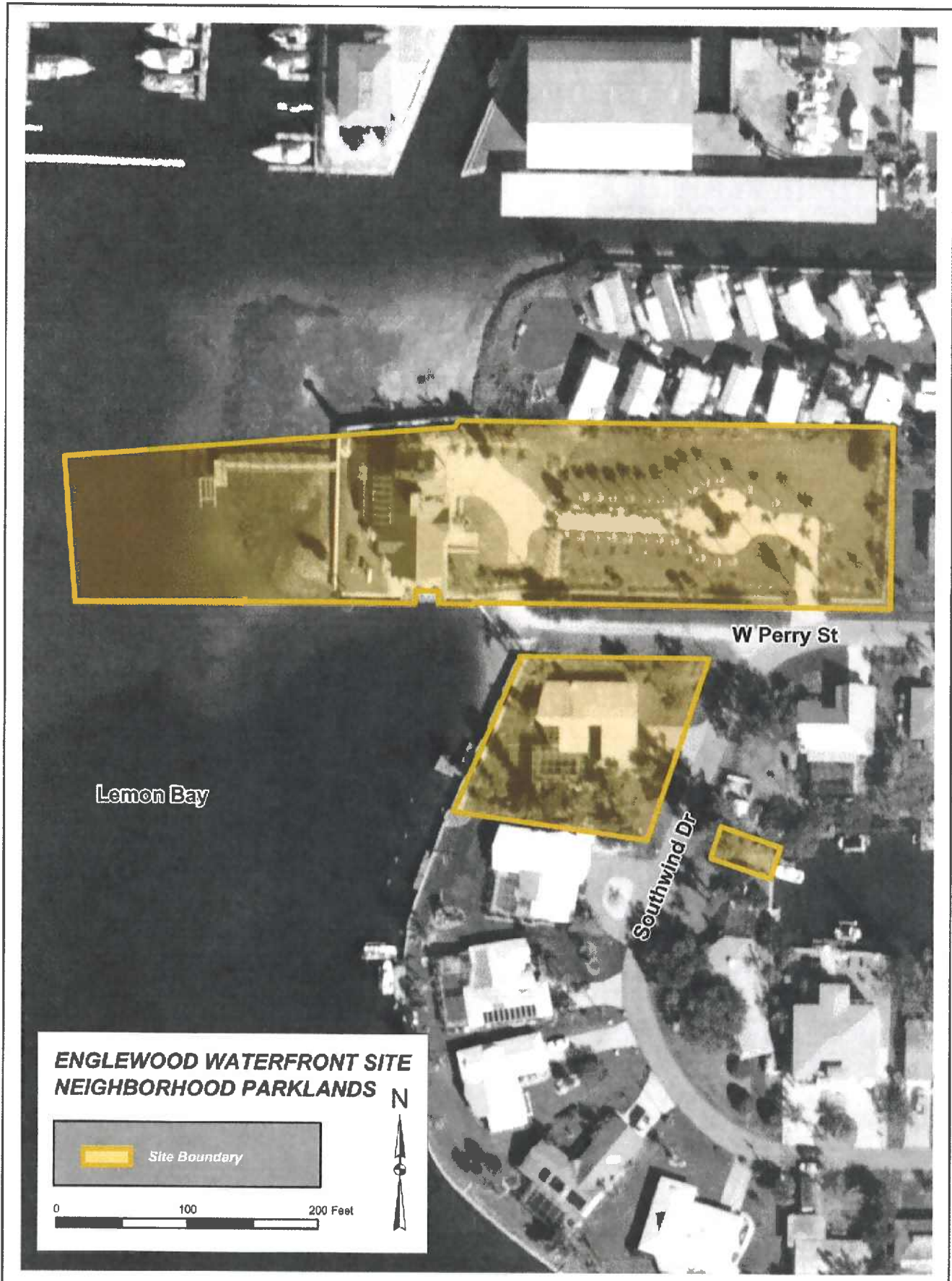
The 2.3-acre site (1.8 acres of upland and 0.5 acre of submerged lands in Lemon Bay) consists of a total of five parcels, two of which are located on Lemon Bay. One smaller parcel is located on a canal with access to Lemon Bay. The two parcels on Lemon Bay flank the public right-of-way of Perry Street as it terminates at Lemon Bay and are occupied by single family residences. One residence includes a covered boat house and an ornamental lighthouse that is a popular local landmark. A vertical concrete seawall extends along both waterfront sites and each also has a dock. The landward, eastern parcels provide a park-like setting with lawn and trees.

### **Importance:**

The Sarasota County Comprehensive Plan, Chapter 3, Policy 1.1.6., states that *Sarasota County shall continue, and whenever and wherever feasible, expand its beach and waterfront acquisition efforts.* This site provides both bay and canal access and enhances public right-of-way bay access. The site may serve as a launching for kayaks, canoes, and other small non-motorized vessels and could provide a location for local youth sailing and rowing programs. There is potential for a small fishing pier. The upland site area could be enhanced with native salt-tolerant vegetation and serve as a demonstration for coastal native landscaping. One of the residences could be retrofitted for community meeting space and water-dependent uses such as storage of club boats.

### **Status:**

Sarasota County acquired the site on June 10, 2007. The site was purchased in partnership with the Englewood Community Redevelopment Agency (CRA); the CRA contributed 2/3 of the acquisition costs and the Neighborhood Parkland Program contributed 1/3 of the acquisition costs. Public input will be sought during the planning process for this site.



**ENGLEWOOD WATERFRONT SITE  
NEIGHBORHOOD PARKLANDS**

 Site Boundary

0 100 200 Feet



## Longboat Key Site

### **Description:**

This 3.88-acre Gulf-to-Bay property is adjacent to Bayfront Recreation Center Park within the Town of Longboat Key. The site consists of four parcels – one west of Gulf of Mexico Drive, and the other three east of the roadway. The western Gulf-front parcel has approximately 100-feet of shoreline, open beach, a developing dune system, and a walkway along the roadway. The bayfront parcel includes approximately 200-feet of shoreline with narrow waterways along the north and south sides that are lined with a mature mangrove fringe. This parcel includes a single-family residence, two docks, and maintained open space. The two remaining parcels front Gulf of Mexico Drive; one is developed with a small commercial building and the other is undeveloped, has a small parking area, scattered trees, and maintained open space.

### **Importance:**

Acquisition of this property provided an opportunity to purchase a set of Gulf to bay parcels within the Sarasota County portion of Longboat Key, adjacent to an existing community/recreation center. This site provides public access to the beach and bay, expands an existing park, and protects one of the few remaining Gulf to bay parcels on the key. It also provides an opportunity to partner with the Town of Longboat Key on a waterfront acquisition. The Town of Longboat Key has expressed an interest in partnering on concept planning, development and operation of the site.

### **Status:**

Sarasota County acquired the 3.88-acre property on March 29, 2007. Staff is working with officials of the Town of Longboat Key to develop a Memorandum of Understanding relative to cooperative planning and operation.

